



CITIZEN CENTRIC REPORT

GUAM POLICE DEPARTMENT

DIPATTAMENTON POLISIAN GUAHAN

MISSION STATEMENT

The Guam Police Department exists to serve the community by protecting life and property; by preventing crime; by enforcing the laws; and by maintaining order for all citizens.

Central to our mission are the values that guide our work and decisions, and help us contribute to the quality of life on Guam.

Our values are characteristics or qualities of worth. They are non-negotiable. Although we may need to balance them, we will never ignore them for the sake of expediency or personal preferences.

We hold our values constantly before us to teach and remind us, and the community we serve, of our ideals. They are the foundation on which our policies, goals, and operations are built.

In fulfilling our mission, we need the support of citizens, elected representatives and island officials in order to provide the quality of service our values commit us to providing.

We, the men and women of the Guam Police Department, value: Human Life, Integrity, Laws and Constitution, Excellence, Accountability, Cooperation, Problem Solving, and Ourselves.

Guam Police Department
Bldg. 13-16A Mariner Avenue
Tiyan, Guam 96913
Tel: 475-8509
Fax: 472-4036
Website: www.gpd.guam.gov
Email: chief@gpd.guam.gov

Table of Contents

Mission Statement	1
Performance	2
Financial Report	3
Future Outlook	4

OUR HISTORY

On August 14, 1905, Guam's first true local policing effort was established under the control of the United States Navy. The first policemen were natives of Guam. These brave and heroic men were members of the Insular Patrol Force as part of the Guam Insular Guard. The U.S. Navy later augmented the police force with members of the U.S. Marine Corps stationed on Guam.

In 1952, the Department of Public Safety was established as a carryover from the U.S. Government-controlled Guam Insular Guard. The 1950 Organic Act of Guam paved the way for Guam's self-government and the formulation of the Government of Guam. The Department of Public Safety was entrusted with the authority to enforce the laws of the territory and federal statutes applicable to Guam. Furthermore, the Department was responsible for the administration and operation of the former Guam Penitentiary and Fire Division.

Effective March 13, 1985, pursuant to Public Law 17-78, the Department of Public Safety was separated into two departments - the Guam Police Department and the Guam Fire Department.



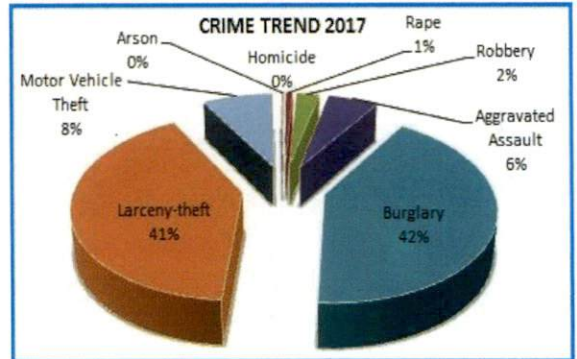
◆ TO PROTECT AND SERVE ◆ TO PROTECT AND SERVE ◆

PERFORMANCE MEASUREMENT

TRENDS: CRIMES AND CRASH INCIDENTS REPORTED TO THE GUAM POLICE DEPARTMENT

TRENDS: CRIMES REPORTED TO POLICE

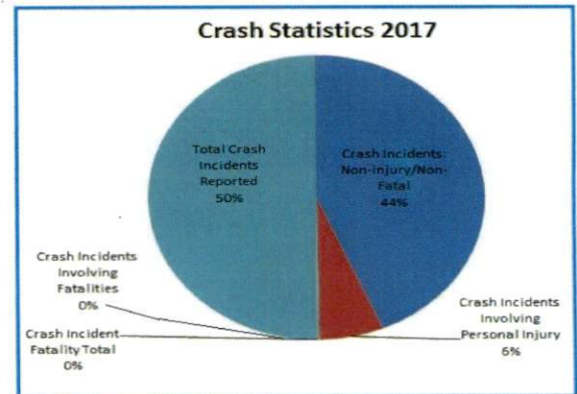
Offense Classification	2014	2015	2016	2017
Homicide	7	8	3	4
Rape	118	160	104	32
robbery	128	124	79	104
Aggravated Assault	294	400	156	229
Burglary	1574	1211	1612	1689
Larceny-theft	2024	2251	1866	1638
Motor Vehicle Theft	258	222	256	320
Arson	17	12	7	9
Part I Offenses Total	4420	4388	4083	4025
Part II Offenses Total	4804	5063	5874	5593
Crimes Volume Total	9177	9451	9957	9517



- ◆ Part I Offenses are those that comprise the Index Crimes due to their seriousness and frequency.
- ◆ Part II Offenses are which only arrest data are collected.

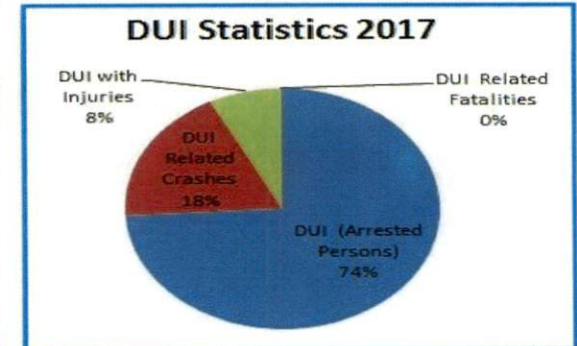
TRENDS: CRASH INCIDENTS REPORTED TO POLICE

Crash Incident Category	2014	2015	2016	2017
Crash Incidents:Non-injury/Non-Fatal	5585	6242	6659	6610
Crash Incidents Involving Personal Injury	850	941	895	933
Crash Incidents Involving Fatalities	21	12	12	24
Crash Incident Fatality Total	26	12	12	25
Total Crash Incidents Reported	6482	7207	7578	7592



TRENDS: DUI CRIME STATISTICS

Driving Under the Influence (DUI)	2014	2015	2016	2017
DUI Arrested Persons	361	393	333	258
Crash Incidents Involving DUI	67	57	55	64
DUI with Personal Injuries	39	26	16	26
DUI Related Fatalities	2	1	0	0



FULL-TIME PERSONNEL MANNING

Law Enforcement Personnel	2014	2015	2016	2017
Officers (Sworn Personnel)	300	325	303	289
Civilian Employees	63	60	55	76
Total GPD Personnel	363	385	358	365

- ◆ All information and statistics were provided by the Guam Police Department Planning, Research and Development *CRIME in Guam 2017 Uniform Crime Report*.
- ◆ To see a full version of the *CRIME in Guam 2017 Uniform Crime Report*, visit the Guam Police Department's website at <http://gpd.guam.gov/>

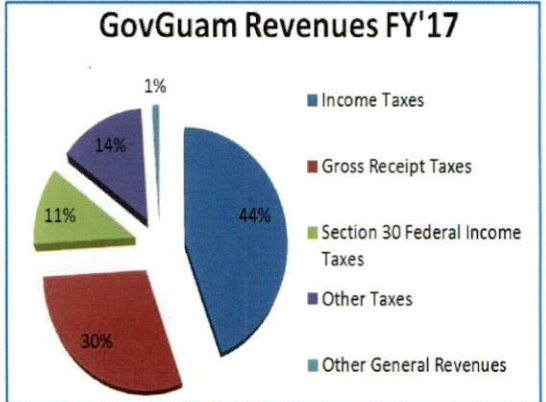
2017 TOTAL CALLS FOR POLICE

Service Call Category	2017
Criminal Investigations Service Calls	13478
Crash Incident Service Calls	8471
Non-Criminal/Non-Crash Service Calls	15358
Total Calls for Service	37307

FINANCIAL REPORT

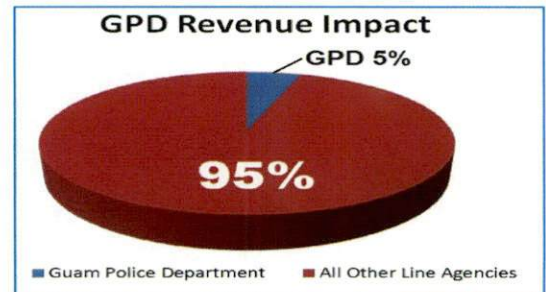
GOVGUAM WIDE GENERAL REVENUES

Income Taxes	\$ 354,709,313.00
Gross Receipt Taxes	\$ 237,133,647.00
Other Taxes	\$ 111,305,006.00
Other General Revenues	\$ 8,561,417.00
TOTAL	\$ 798,864,118.00



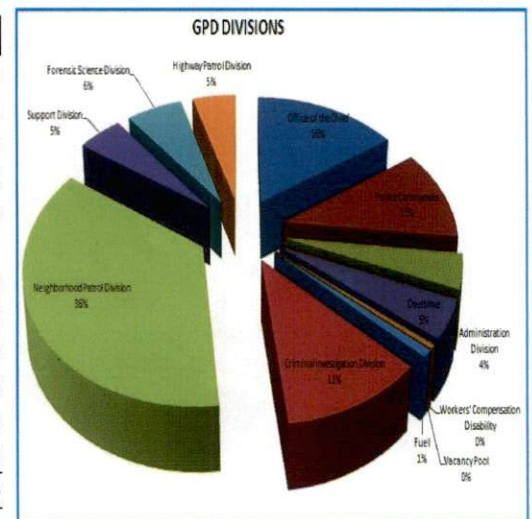
GPD FUNDING IMPACT FY' 2017

Guam Police Department	\$ 35,609,698.00
All Other Line Agencies	\$ 678,569,751.00
Total GOG Wide Revenue	\$ 714,179,449.00



GPD Division Budget Appropriations

GPD DIVISIONS	2017	2016
Office of the Chief	\$ 4,818,531.00	\$ 3,762,238.00
Police Commander	\$ 3,493,428.00	\$ 4,055,361.00
Administration Division	\$ 1,303,617.00	\$ 1,018,570.00
Overtime	\$ 1,438,957.00	\$ 2,079,272.00
Workers' Compensation Disability	\$ 11,279.00	\$ 11,279.00
Vacancy Pool	\$ 142,577.00	-
Fuel	\$ 267,940.00	\$ 222,479.00
Criminal Investigation Division	\$ 3,476,804.00	\$ 4,169,396.00
Neighborhood Patrol Division	\$ 11,243,189.00	\$ 11,692,418.00
Support Division	\$ 1,483,947.00	\$ 1,504,451.00
Forensic Science Division	\$ 1,868,773.00	\$ 1,903,011.00
Highway Patrol Division	\$ 1,455,135.00	\$ 1,221,433.00
TOTAL APPROPRIATIONS	\$ 31,004,177.00	\$ 31,639,908.00



Independent Audit

The Guam Police Department is part of the government-wide audited financial statement. An independent audit was performed by Deloitte & Touche, for the fiscal year ended September 2017.

For more information of the independent audit, please visit the OPA website at:

http://www.guamopa.com/docs/GovGuam_fs17.pdf

FUTURE OUTLOOK

OVERALL FISCAL YEAR BUDGET SUBMISSION

The Guam Police Department overall expends 93% of the fiscal year budget on personnel cost which includes salaries, benefits, and overtime. As seen throughout FY2016, overtime expenditures were managed carefully through changes in assignment, augmentation and scheduling. GPD will continue to administer reductions through continued change and efficiency of operations. However, Fiscal Year budget appropriations continue to fall short of the department's submission. GPD's submission of the FY2017 and FY2018 budget proposals are detailed projections of programs that if left unfunded, impact our ability to meet goals and objectives and the overall protective services we provide.

HIGHLIGHTS

COMMUNITY ORIENTED POLICING

While in our second year of Mandaña Community-Oriented Policing GPD's transformative growth is seen in the much closer Community Partnerships we have built with the Neighborhood Watch Program implementing thirty eight (38) NWP Groups in sixteen (16) villages so far. The NWP is a definitive force multiplier of public safety efforts directly contributing to the prevention of criminal acts, critical information on illicit drug distribution activity, and details that have led to the apprehension of crime suspects. The Business Watch Program has provided the opportunity for GPD to have the broad discussion of safety and security for hundreds of businesses across the island. From the "Mom & Pop" village store to the boutique Hotels in the tourist district, officers in the field have established a robust safety network among businesses. The Coffee With A Cop, Cookies With A Cop, Junior Police Cadet, and D.A.R.E. programs have carried our message throughout all age groups, and with the complete rollout of all the Community Oriented Policing initiatives in the upcoming Fiscal Year, we expect to fulfill the paradigm shift away from traditional policing in GPD. A 2 year strategic plan was developed and initiated at the start of the 2017 fiscal year to ensure accountability and appropriate implementation.

MANDANA DRUG TASK FORCE (MDTF)

Executive Order No. 2017-01, establish the Mandana Drug Task Force (MDTF). The Mandana Drug Task Force continues its efforts towards the interdiction of illicit drugs and activities. Since its inception, there have been more than 180 arrests

for possession of primarily Crystal Methamphetamine, of which more than 1200 grams has been confiscated with an estimated value of \$600,000, along with more than 15,000 grams of Marijuana valued at over \$500,000, and Prescription Pills valued at more than \$22,000. To achieve these arrests over 90 Search Warrants were executed to apprehend these drug offenders, a joint effort with our SWAT/K-9 contingent. The MDTF continues to address illicit drug activities and through intelligence is currently investigating the confiscation of more than 17,000 grams of Cocaine valued at close to \$1,000,000 which has resulted in 10 individuals facing charges for possession and distribution, by far this has been the largest Cocaine seizure to date. Also 430 grams of Spice (Synthetic Marijuana) has been confiscated consequently resulting in 4 four individuals facing charges for possession and distribution, by far this has been the largest seizure as well. With these arrests regarding Cocaine and Spice, it unfortunately suggests the infiltration of other alternative drugs into the island, however the MDTF will remain diligent in combatting the illicit drugs affecting our community. With the success of the MDTF, our federal counterparts have taken a more intimate role in operations thus strengthening our efforts and working relationships.

FUTURE OUTLOOK

CAPITAL IMPROVEMENT PROJECTS:

- Construction and completion of the Central Precinct Command, located in the village of Sinajana.
- Renovation of the Environmental Control System at the GPD Forensic Science Laboratory
- Ground breaking and construction of a new Evidence Control Section (ECS) building, located in the village of Yigo

PHYSICAL FITNESS PROGRAM

- Through research GPD developed a comprehensive physical fitness program. This physical fitness program consists of three (3) components.
 - I. Physical Fitness Program Manual
 - II. Health and Nutrition Program
 - III. Police Officer Physical Abilities Test (POPAT)